



Maquette volante par E. Fillon

taille "Peanut"

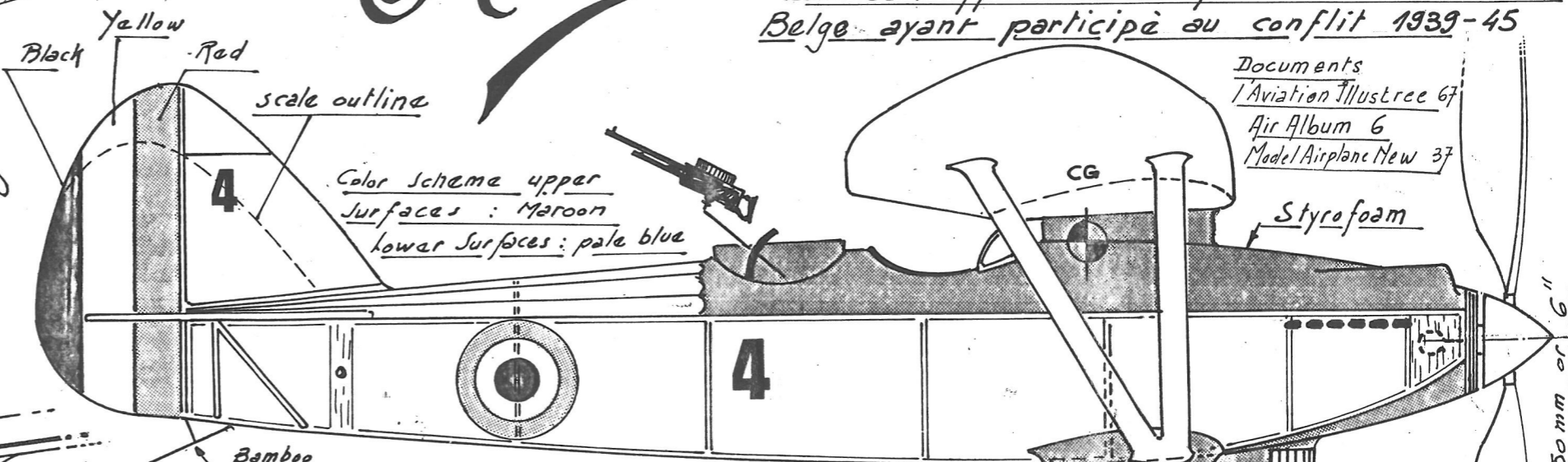
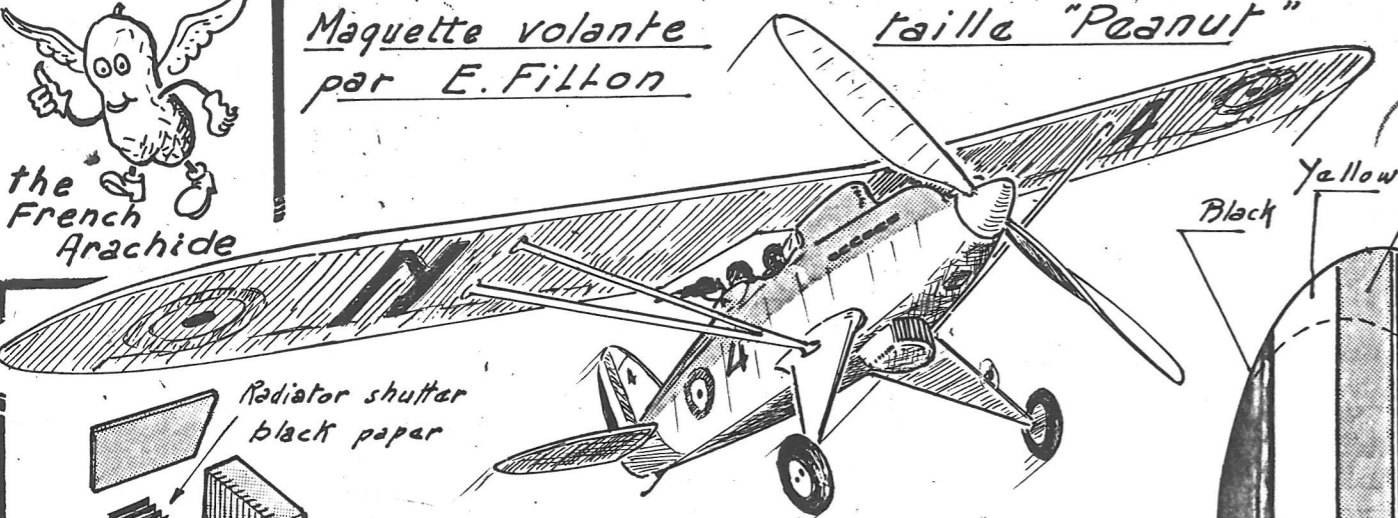
# Le Renard

## R-31

Biplace de Reconnaissance

le seul appareil de conception et de construction Belge ayant participé au conflit 1939-45

Documents  
L'Aviation Illustrée 67  
Air Album 6  
Model Airplane News 37



Radiator shutter black paper

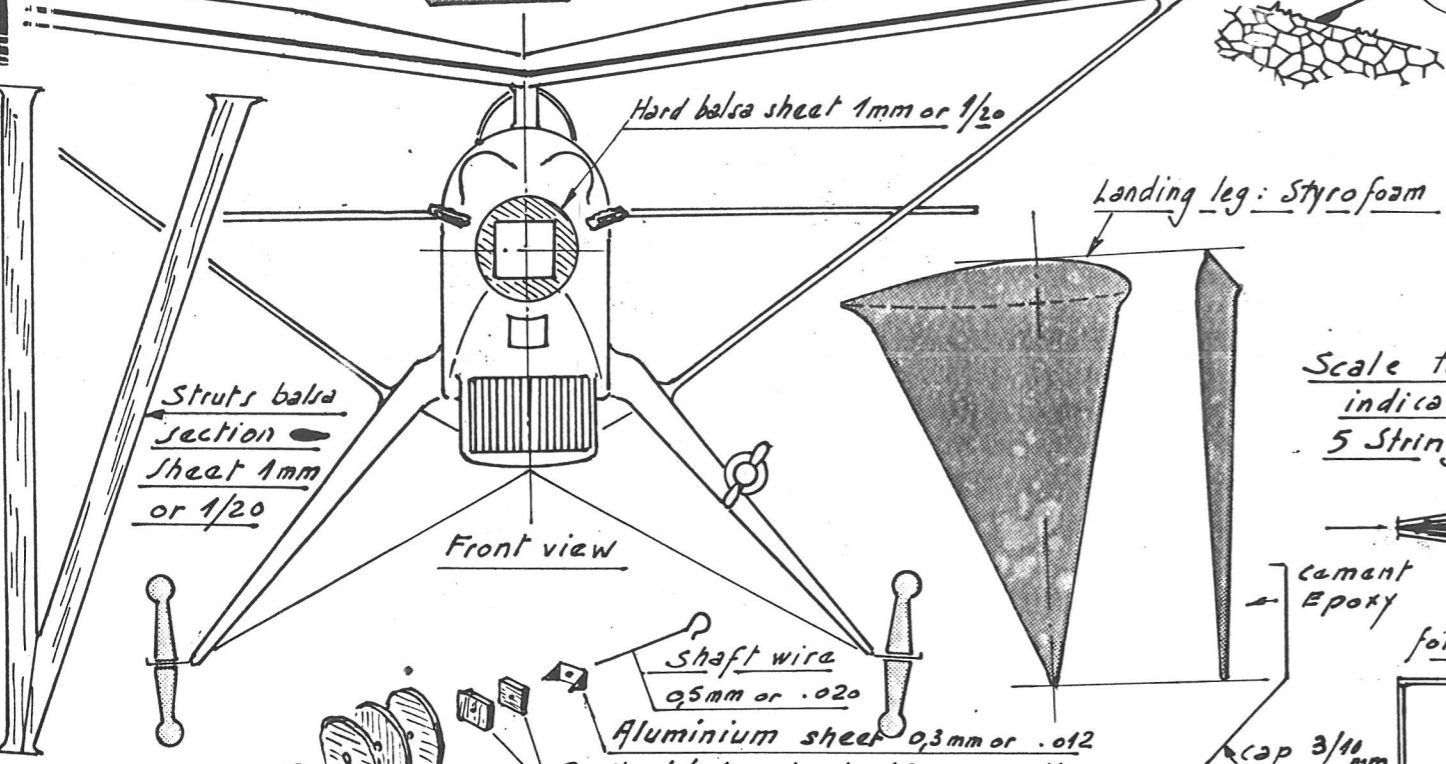
Radiator: Styrofoam or balsa

Styrofoam

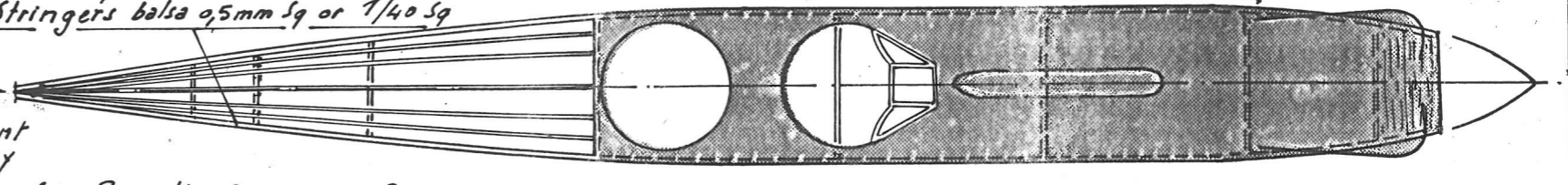
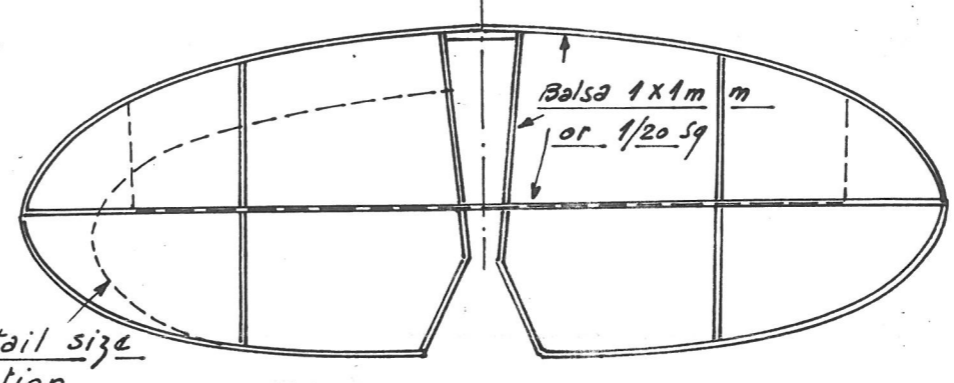
Scale Wheel Location

Wheels Styrofoam or balsa dia 22mm or 7/8

Propeller balsa dia 150mm or 6"



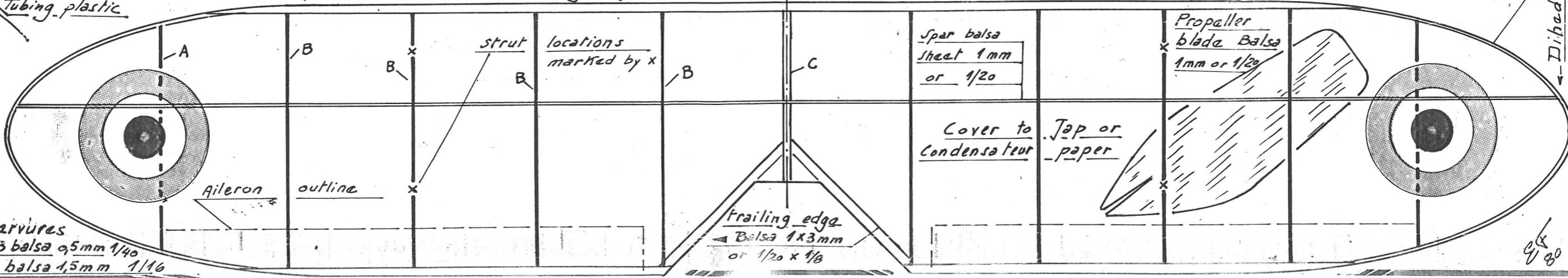
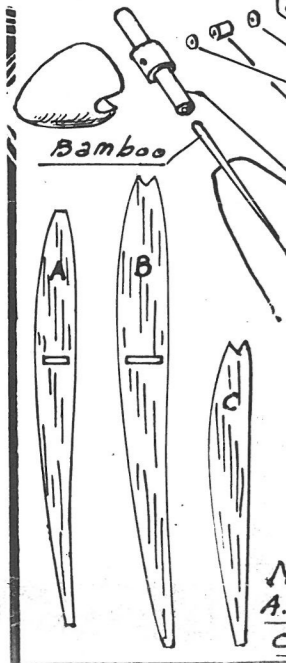
Scale tail size indication  
5 Stringers balsa 0.5mm sq or 1/40 sq



Leading edge balsa 2x2 or 3/32 sq

Rubber motor Pirelli 1 loop to 1' ou 300 mm en 1x1.5mm or 1/16 Wide

Bamboo 1.5mm or 1/16



9/80