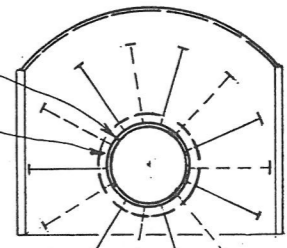


Designed for 100 miles an hour...
BURGESS-CURTIS
 Cacahuète - PEANUT SCALE by Jean-François FRUGOLI

- ① Nose plug
 - ② Fixed tube
 - ③ Revolving tube (with cylinders)
- You could simplify the building with fixed tube & cylinders



2 staggered rows of 7 cylinders
 2 rangées décalées de 7 cylindres

MOTOR.
 160 HP. GNOME

